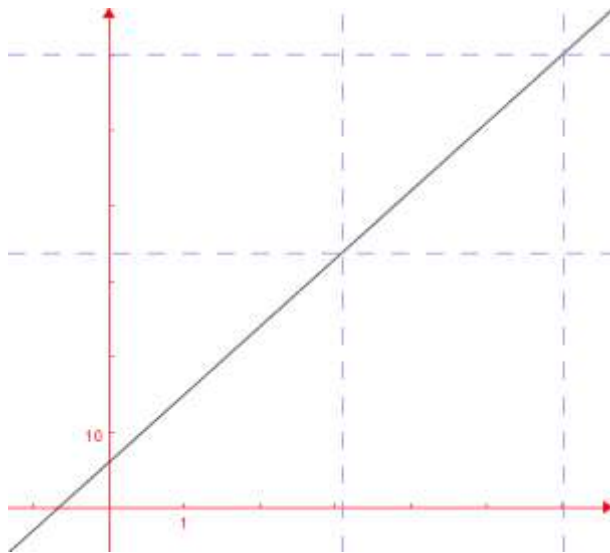


**DM n° 7**

**Exercice 47 page 62**



- 1) On a  $f(x) = 6 + 9x$
- 2) Ci contre
- 3)  $S = [3 ; 6]$

**Exercice 59 page 63**

a) On a  $A(x) = x(x - 2)$

x	$-\infty$	0	2	$+\infty$
x	-	0	+	+
x-2	-	-	0	+
A(x)	+	0	-	0

b) On a :  $A(x) = (x + 1)(1 - x)$

x	$-\infty$	-1	1	$+\infty$
x+1	-	0	+	+
1-x	+	+	0	-
A(x)	-	0	+	0